

ER-ABILITY

Future of combined mobility



ENABLED 
ROBOTICS

ER-ABILITY

The ER-ABILITY platform is developed to give you the freedom and possibility to move and custom-fit solutions within your company. The platform is designed for collaborative use enabling it to share the workspace with humans. The intuitive and easy to use interface enables you to quickly setup and customize your applications.

APPLICATIONS



Perform machine tending for multiple machines with a single robot and integrate your part logistics moving finished productions directly to packaging.



Automatically move boxes from the warehouse and place these on the right locations on shelves or manufacturing stations.



Refill machines with consumables, remove waste and perform periodic maintenance tasks.



Collect samples and measurements for quality control of large parts and plants.

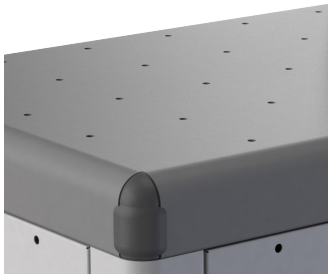


Automate lab tasks in clean rooms to limit human presence and reduce risk of contamination.

THE ROBOT



Built-in Dynamic Position System for fast millimeter precise calibration of robot to the environment.



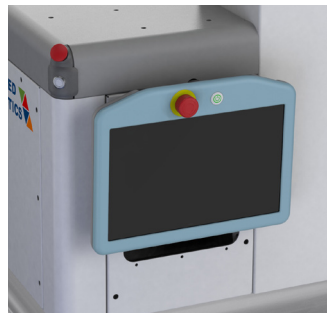
Stainless steel top with M6 threads for easy mounting of fixtures and tools.



Integrated status light for the robot arm and designed with round shapes for collaborative use.



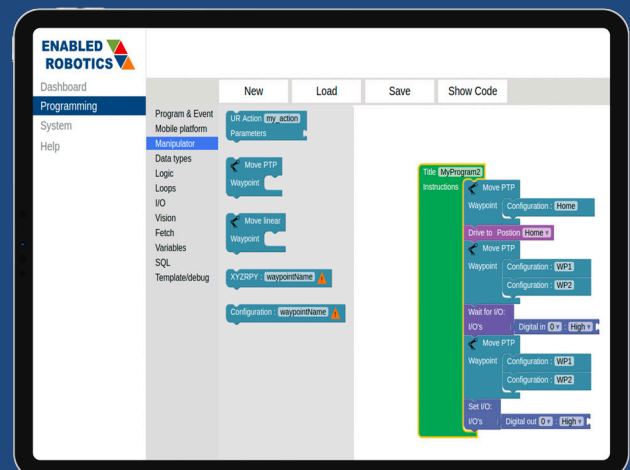
Safety systems combined and integrated with external e-stops in the corners.



Holder for UR teach pendant and storage for cabling.

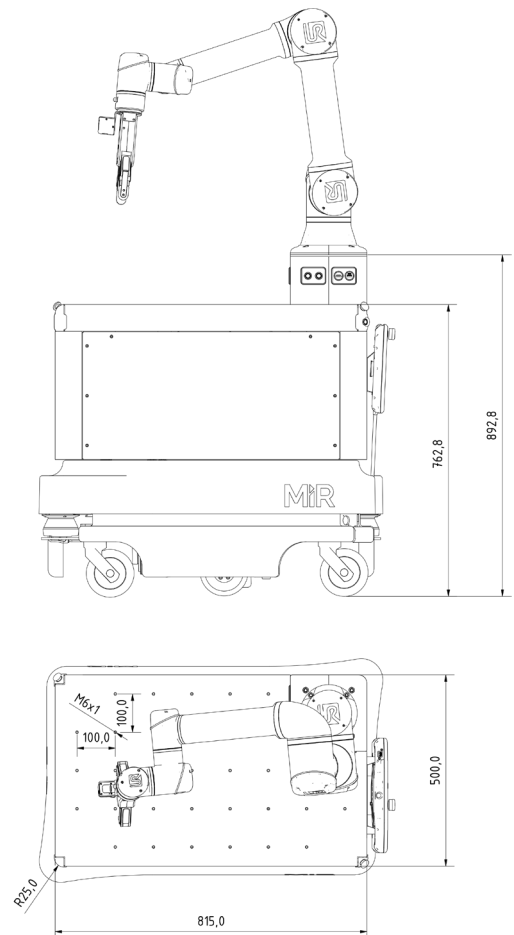
Easy setup of applications

- Intuitive block-based programming interface.
- Programming of UR either through UR's own or through the block-based interface.
- Interfacing through SQL to retrieve production information.
- Web-based interface allows you to connect and program the robot from your smart-phone, tablet or computer.
- Built-in Dynamic Position System which enables fast millimeter precise calibration of robot to environment.



| | |
|--------------------------------|--|
| Size | 890mm x 580mm x 1500mm |
| Weight | 145 kg (with UR5e) |
| Mobile Platform Options | MiR100, MiR200 |
| Arm Options* | UR3, UR5, UR3e, UR5e |
| Mobile Platform Payload | 120kg (with MiR200 and UR5e) |
| Arm Payload | 3kg for UR3 and UR3e 5kg for UR5 and UR5e |
| Operating Time | 8 hours (depending on use) |
| Charge Time | 0% to 80% in 3 hours |
| Sensor System | 2MP Camera with High Dynamic Range |
| Communication | Dual-band Wireless AC/G/N/B |
| Environment | +5°C to 40°C (humidity 10-95% non-condensing) IP20 |

* For UR10 or UR10e contact us for options



**ENABLED
ROBOTICS**

Enabled Robotics ApS
Hollufgårdsvvej 31
DK-5260 Odense S

Telephone: +45 61702542
contact@enabled-robotics.com
www.enabled-robotics.com

